

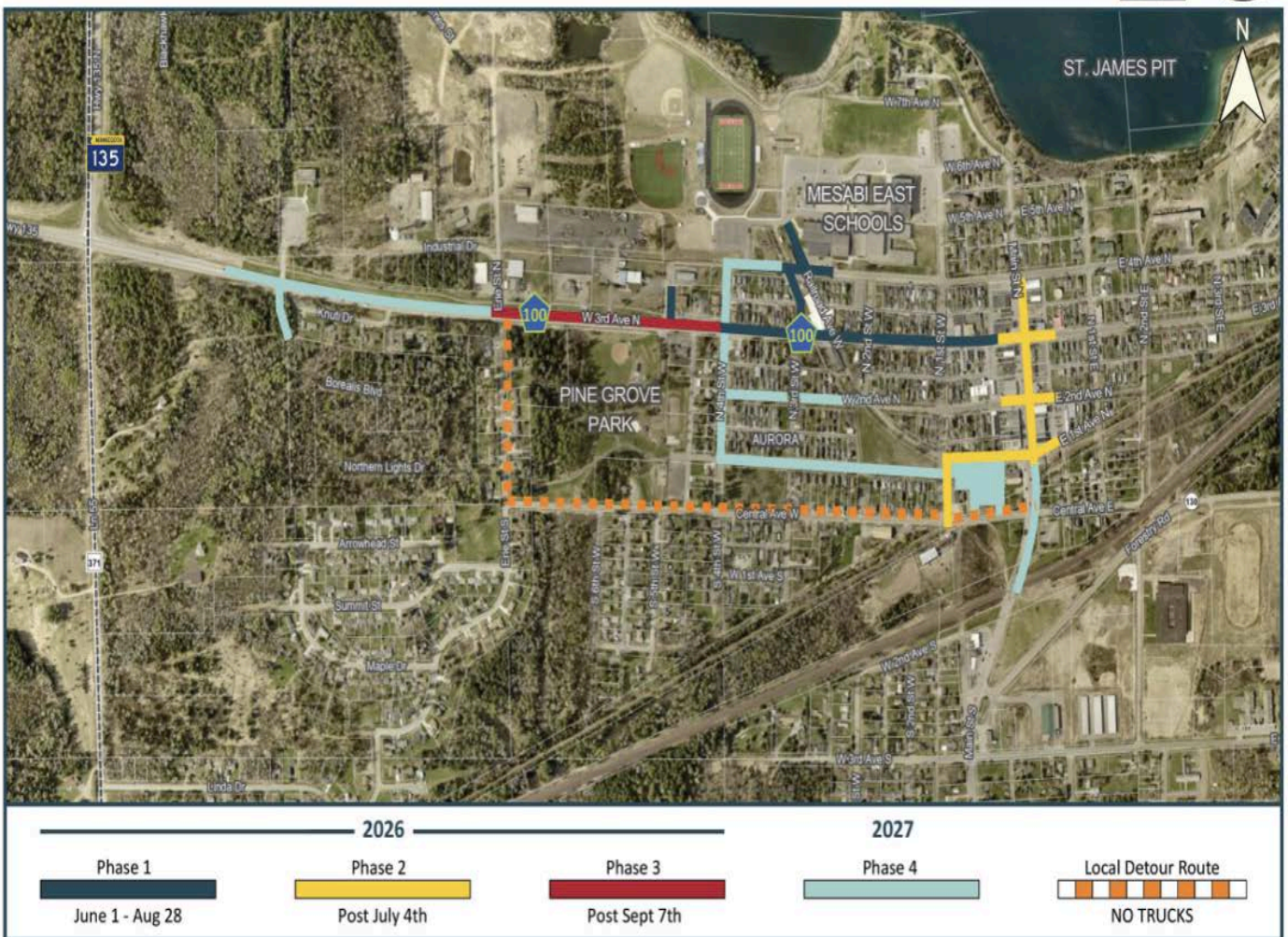
Hello,

Mesabi East will have alternate access for vehicles and individuals for our summer program due to road construction. Construction is estimated to start mid June on CSAH 100, the Railroad and 3rd intersection, and our pool parking lot.

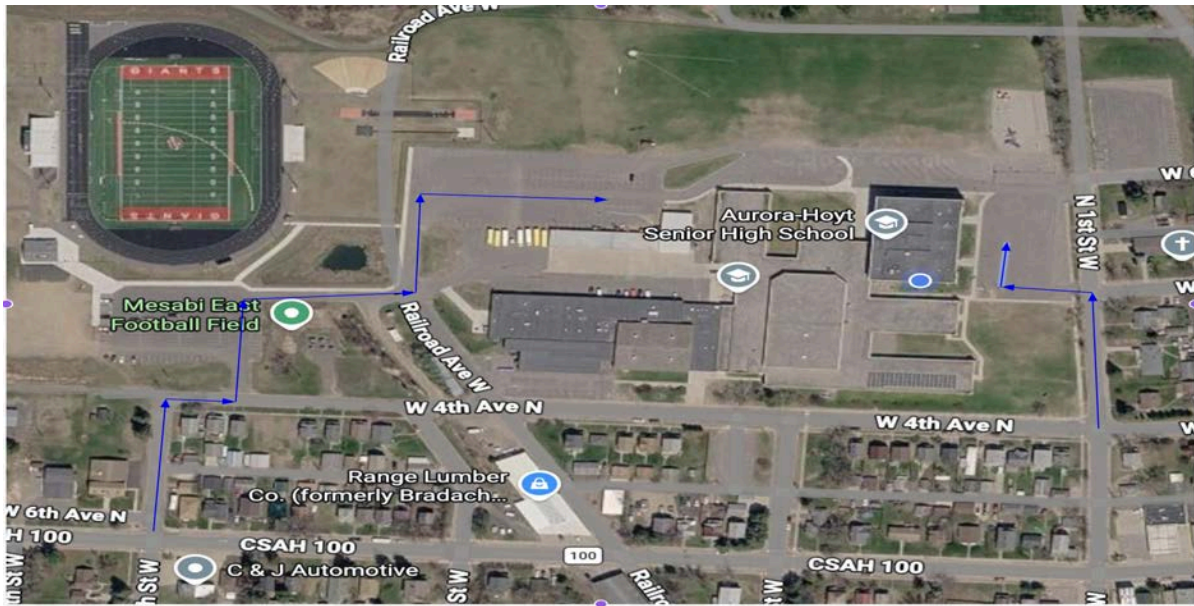
1. There will be phased construction upon roads around the school district. Please see the map to know when construction is occurring.

## 2026 - 2027 CSAH 100 / Local Street & Utility Improvements

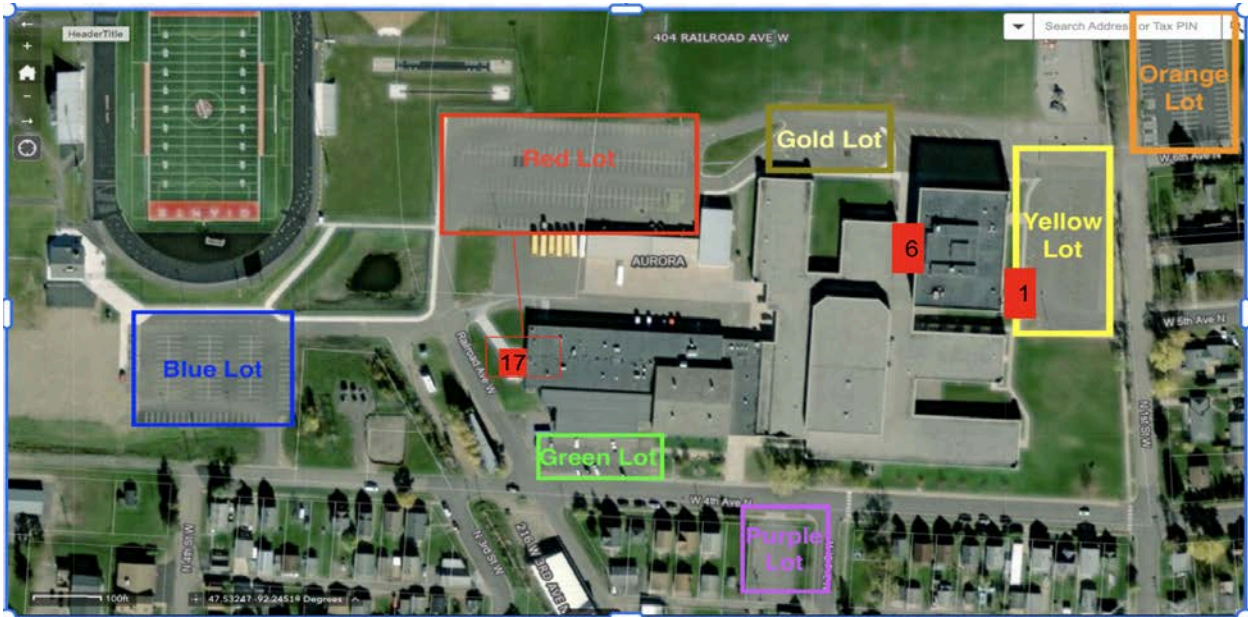
ST. LOUIS COUNTY & CITY OF AURORA



2. **Vehicle access** to school facilities will be via the athletic complex or N 1st st W. Please see the blue arrows on map.



3. Access for most school facilities will be via Door 6 from the Gold, Yellow, or Red Lot. Access via Door 1 or 2 will be from the Yellow or Orange Lot.



4. Access to the **pool** will be via door 17. Please use the Red parking lot once construction has begun on the 3rd and Railroad Intersection.

Please access the road construction information page for detailed information and how to submit questions about road construction to the county. - [Construction Webpage](#)